

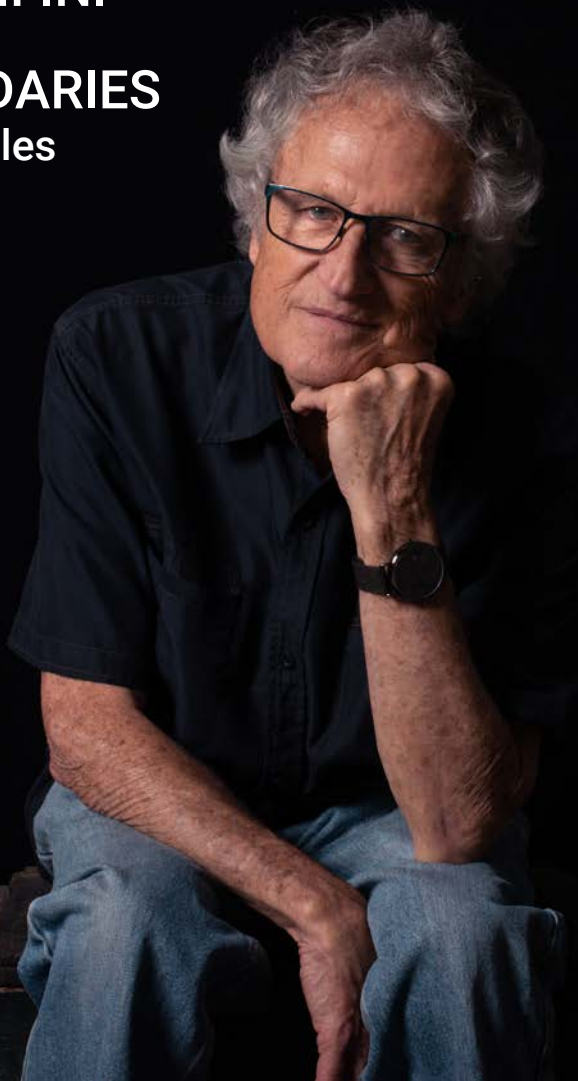
Promosso da :



A cura di Manuela Candini, Agim Sako e Ufficio Erasmus - prof. ssa Maria Rita Bentini

L'arte di Leon Pericles
SUPERARE I CONFINI

PUSHING BOUNDARIES
The Art of Leon Pericles



LA PRECISIONE DEL MULTIPLO

L'OPERA INCISORIA DI LEON PERICLES

L'incisione tradizionale si distingue per il rigore del lavoro di incisione su lastra e per il processo di stampa, circolazione, anch'esso determinato da regole e metodo. La tradizione vuole che l'edizione sia composta da un numero di stampe uguali e identiche, generate con lo stesso inchiostro e sullo stesso formato e tipo di carta per ottenere il numero di stampe prefissato.

In questa mostra di opere dell'artista australiano Leon Pericles esploriamo il concetto di fedele riproduzione dell'edizione. L'esplorazione di tutta la vita di Leon della stampa precisa viene spinta oltre i confini della stampa tradizionale mentre aggiunge oggetti, acquerello, collage e riformula l'idea dell'edizione. Le opere sembrano originali una tantum, ma non lo sono. Sono edizioni fino a 150, stampate a mano, dipinte a mano e assemblate a mano per essere identiche.

Leon è un artista con sede nell'Australia occidentale la cui prolifica carriera dura da più di 55 anni. Meglio conosciuto per il suo lavoro di incisione, Leon ha anche esplorato tutti gli aspetti dell'incisione, della pittura e della scultura. Scopri di più su Leon e il suo lavoro visitando www.leonpericles.com.au

THE PRECISION OF THE EDITION

THE ETCHING WORK OF LEON PERICLES

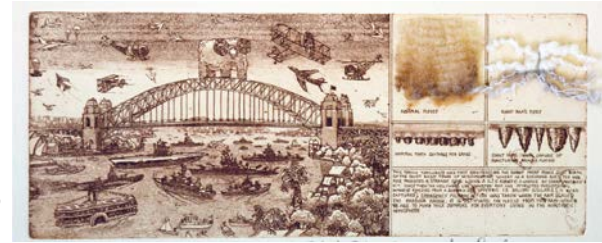
Traditional etching is distinguished by the rigorousness of the etching work on the plate and by the process of printing, circulation, also determined by rules and method. Tradition has it that the edition is made up of a number of equal, identical prints, generated with the same ink and on the same size and type of paper to obtain the predetermined number of prints.

In this exhibition of works by Australian Artist Leon Pericles we explore the concept of faithful reproduction of the edition. Leon's life-long exploration of precise printmaking is pushed beyond the boundaries of the traditional print as he adds objects, watercolor, collage and re-frames the idea of the edition. The works look as though they are one-off originals but they are not. They are editions of up to 150, hand-printed, hand-painted and hand-assembled to be identical.

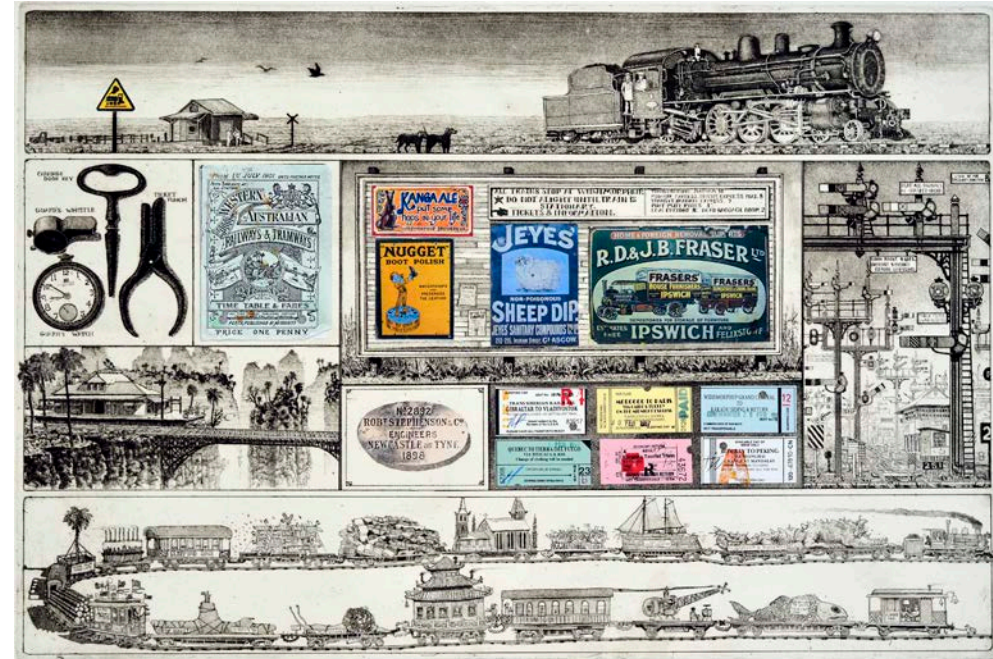
Leon is a West Australian based artist who's prolific career has spanned more than 55 years. Best known for his etching work Leon has also explored all facets of printmaking, painting and sculpture. Learn more about Leon and his work by visiting www.leonpericles.com.au



Fragments of an Explorer's Dream, 1989
etching, hand-coloured with collage and construction, 66 x 41 cm



It Came From Beyond the Black Stump, 1988, etching with collage, 12.5 x 31.5 cm



Steam & Steel, 1988 etching, aquatint and collage, 44 x 66 cm



Damien's Kite, 1994
etching with collage and construction
21 x 40 cm



In Search of the Lost City Mountain, 1992, etching with collage and construction, 48.5 x 73.5 cm



Batavia 28 29 South 113 47 East, 2002 etching with collage, 70 x 34 cm



Teardrops of the Gods, 1999 etching with collage, 77 x 50 cm



Royal Widji Guild of Old Explorers, 1996 etching with hand-colouring and collage, 73 x 42 cm

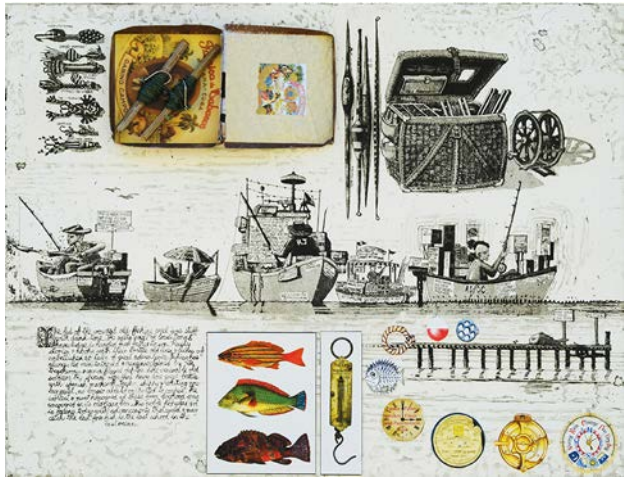


Retrospective, 2002 etching, hand-coloured with collage, 16 x 16 cm

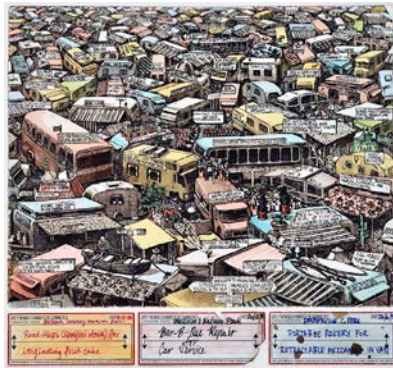
A Land of Treasures, 2007 etching with collage 45 x 9.5 cm



An Apple a Day, 2006 etching with giclee, collage and construction, 53 x 78 cm



I Think I've Got Something, 2007
 etching with collage and construction, 29.5 x 39.5 cm



The Great Escape, 2007
 etching, hand-coloured with collage, 24 x 26 cm



It's Definitely Kitsch, 2021
 etching, hand-coloured with collage
 58 x 38 cm



It'll Be Huge in the Morning, 2012 etching, giclee
 with collage and construction, 90 x 60 cm



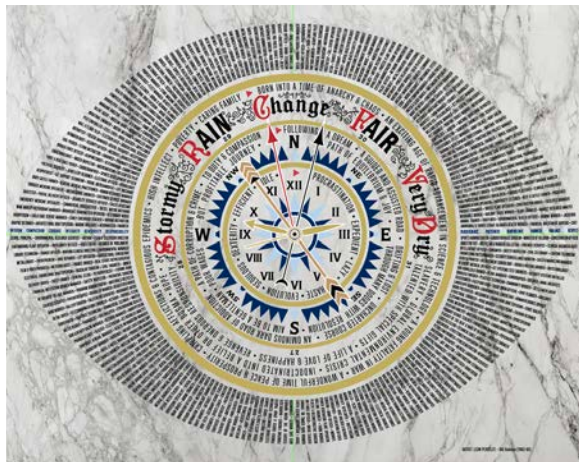
It Wasn't Milk & Honey, 2014 etching, giclee with collage and construction, 51 x 79.5 cm



Seconds Before Goff & Sue's Life Changed Forever, 2022
 etching, hand-coloured with collage, 33 x 41 cm



Leon nel suo studio di Perth | Leon in his Perth studio 2008



Pietra incisa con pavimento in ottone da installare presso la Hale School Perth Western Australia. Il design è stato ispirato dall'acquaforte di Leon *From Humble Beginnings*. | Engraved stone with brass floor tile to be installed at Hale School Perth Western Australia. The design was inspired by Leon's etching *From Humble Beginnings*.

Mostra di | Exhibition by Leon Pericles Studio (Pen & Paint Pty Ltd)
www.leonpericles.com.au | info@leonpericles.com.au
 Perth & Margaret River Western Australia

Special thanks to | Ringraziamenti speciali a
 Accademia Belle Arti Bologna, Prof. Manuela Candini, Prof. Agim Sako,
 Francesco Geronazzo, ReBecca Shilkin and the Government of Western Australian.



From Humble Beginnings, 2008
 etching with collage, 60 x 27 cm



Department of
 Local Government, Sport
 and Cultural Industries

